

# Directions to Goods Bank NEO

**7550 Bittern Ave  
Cleveland, OH 44103  
(216) 677-2454**

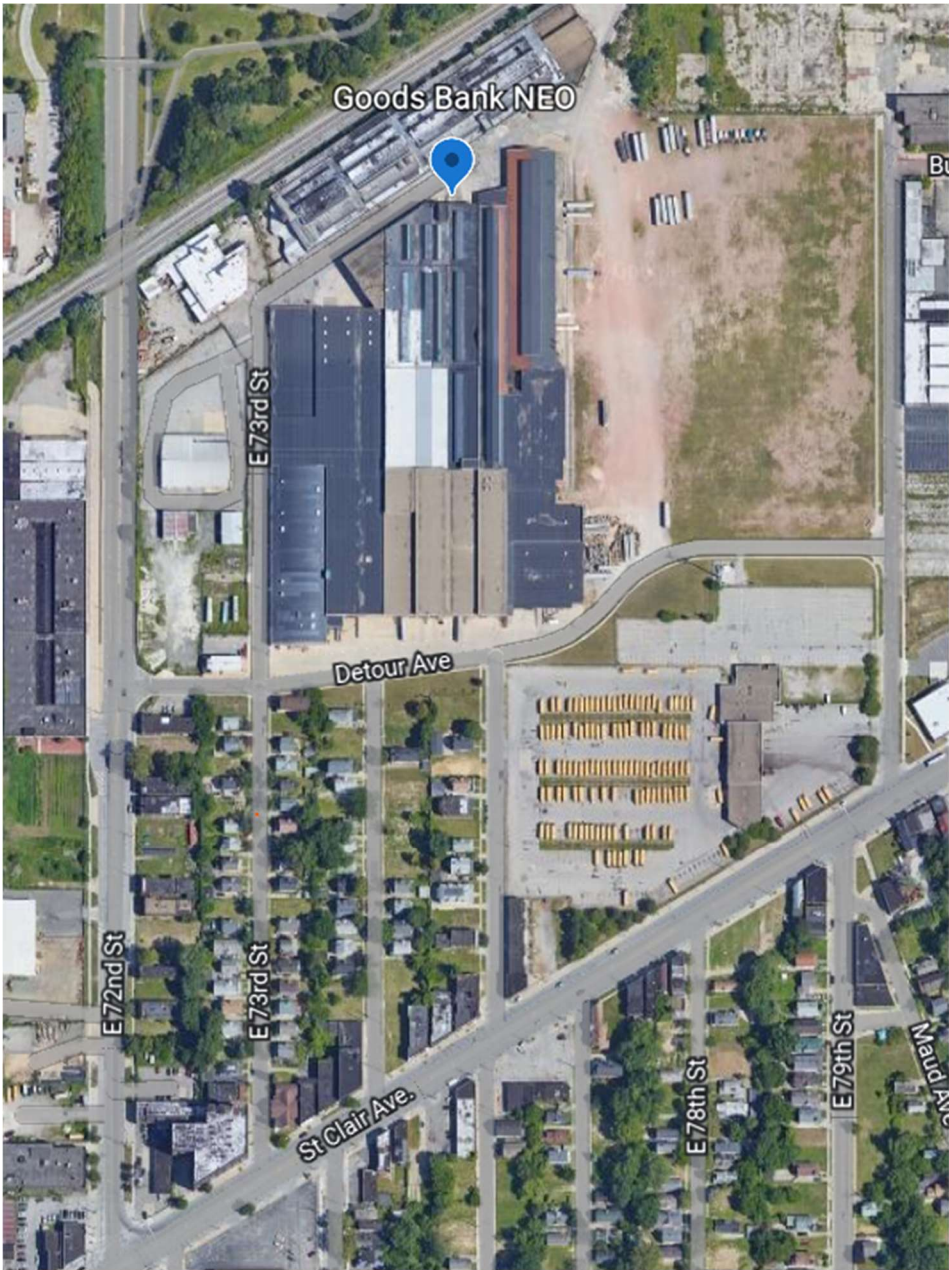
**Goods Bank NEO is located just south of Gordan Park.  
One street east of E. 72nd St.  
Bittern Ave is accessed from E 73rd St.  
We are housed in a warehouse at the rear of the Shoreway Commerce Park.**

**From I-90  
Head south on 72nd St.  
Turn left onto Quinn Ct.  
Turn left onto E. 73<sup>rd</sup> St.  
Turn right onto Bittern Ave  
The warehouse entrance is located 400 ft on your right.**

**From Westside Suburbs  
Take I-90 East  
Take Exit 176 on to E. 72<sup>nd</sup> St toward SR-283 West.  
Turn left onto Quinn Ct.  
Turn left onto E. 73<sup>rd</sup> St.  
Turn right onto Bittern Ave  
The warehouse entrance is located 400 ft on your right.**

**From Eastside Suburbs  
Take I-90 West  
Take Exit 176 on to E. 72<sup>nd</sup> St.  
Turn left on 72nd St.  
Turn left onto Quinn Ct.  
Turn left onto E. 73<sup>rd</sup> St.  
Turn right onto Bittern Ave  
The warehouse entrance is located 400 ft on your right.**

# Directions to Goods Bank NEO



# Directions to Goods Bank NEO

